



JULIAN

TEACHING SCHOOL HUB

Guide to the Early Career
Teachers Programme

About the ECT Programme

The Julian Teaching School Hub serves schools in Broadland, King's Lynn and West Norfolk, North Norfolk, and Norwich. It is Ambition Institute's delivery partner for the Early Career Teachers (ECT) programme in the area.



Ambition Institute's fully-funded Early Career Teachers programme delivers the government's Early Career Framework. It offers a tried and tested two-year support package for early career teachers to increase their confidence in teaching effectively, and helps experienced educators to become supportive mentors.

"The content and additional materials for the mentor conferences and clinics are both relevant, interesting and useful. It's excellent for our own practice too, as it makes me much more conscious of where I can improve simultaneously."

"I find the step by step breakdown of weekly learning very useful, and the time with my mentor to explain what went well and what can be improved upon: these sessions allow me to see that I am developing as a teacher."



REGISTRATION FOR SEPTEMBER 2024 OPENS IN JULY



www.thejulian-tsh.org.uk



julian-tsh@ndhs.org.uk



[TheJulianTSH](https://twitter.com/TheJulianTSH)



JULIAN
TEACHING SCHOOL HUB

What's involved?

Tried and tested support.

Access tried and tested materials and training designed for early career teachers and mentors which have been adapted and improved since Ambition's involvement in the Education Endowment Foundation pilots in 2019.

For early career teachers:

- Three day-long conferences covering the most important aspects of the Early Career Framework
- 30 mins of self-directed study per week in year one and fortnightly in year two
- Termly, facilitated twilight webinars tackling tricky areas of practice
- Weekly coaching sessions with mentors.

For mentors:

- Two one-day conferences in year one covering induction to the Early Career Framework and instructional coaching
- A facilitated webinar to develop instructional coaching practice at a more granular level
- Tailor learning with termly one-to-one sessions in year one and a further session in year two
- Weekly online, self-directed study for ongoing support in year one, becoming fortnightly in year two
- Weekly guidance to produce mentor session materials in year one, then fortnightly in year two.

REGISTRATION FOR SEPTEMBER 2024 OPENS IN JULY



www.thejulian-tsh.org.uk



julian-tsh@ndhs.org.uk



[TheJulianTSH](https://twitter.com/TheJulianTSH)



JULIAN
TEACHING SCHOOL HUB

How do we register?

[Register with DfE and Ambition Institute](#)

When you employ an early career teacher you must register them and their mentor on the DfE portal 'manage training for early career teachers'. You will be asked to specify a lead provider (Ambition Institute) and a delivery partner (the Julian Teaching School Hub).

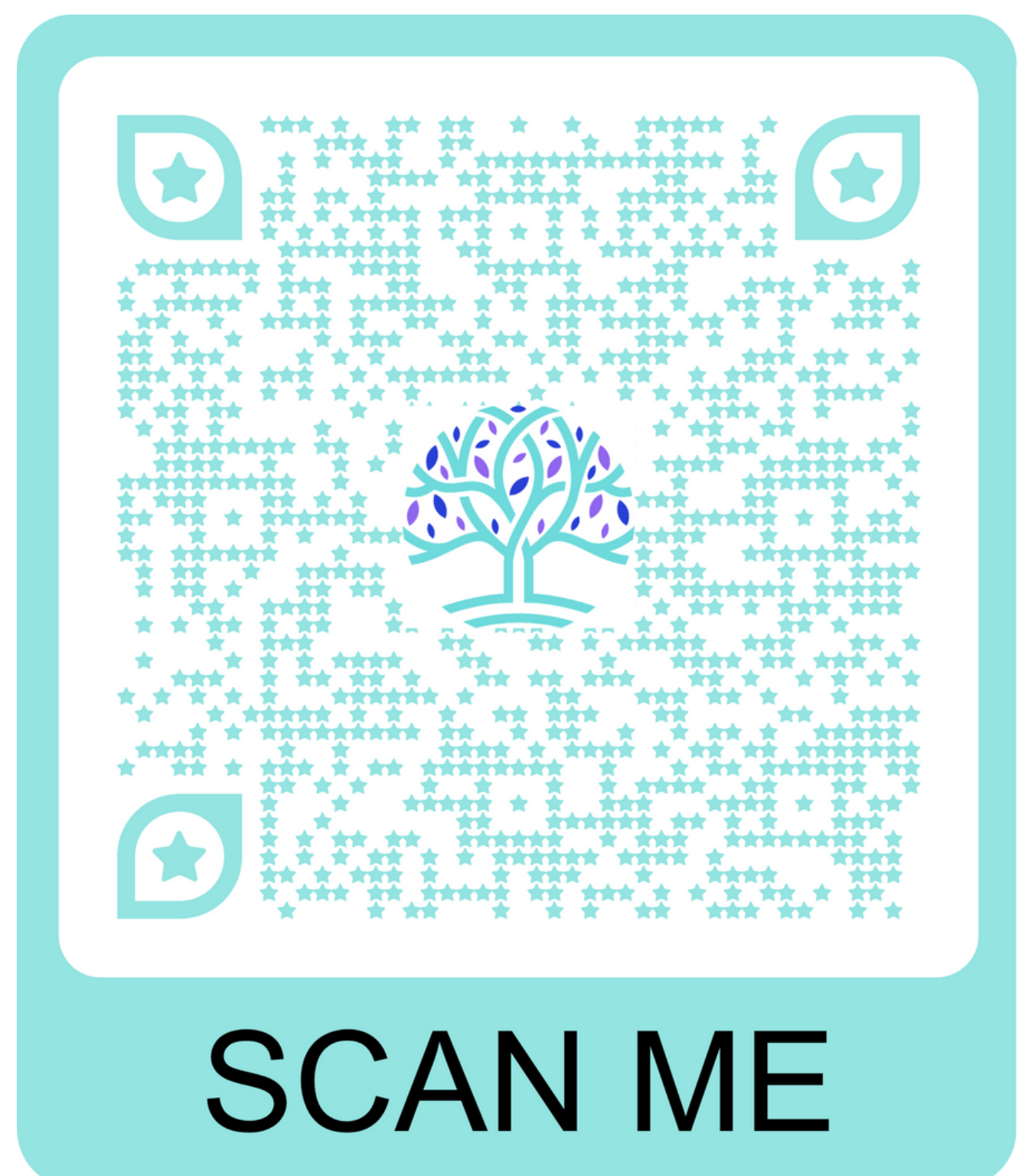
These details will be passed to Ambition Institute for registration on their portal MyAmbition.



[Register with the Julian Teaching School Hub](#)

You must also email us at Julian-tsh@ndhs.org.uk to let us know that you want to work with us. We will ask you to complete a short online form, and will then send you details of induction conferences and any further information that you need.

If you have any questions about any stage of the registration process, please contact the Julian Teaching School Hub in the first instance.



REGISTRATION FOR SEPTEMBER 2024 OPENS IN JULY



www.thejulian-tsh.org.uk



julian-tsh@ndhs.org.uk



[TheJulianTSH](https://twitter.com/TheJulianTSH)



JULIAN
TEACHING SCHOOL HUB