



JULIAN
TEACHING SCHOOL HUB



JULIAN

TEACHING SCHOOL HUB

NPQs

In partnership with TDT.



TheJulian-TSH.org.uk



Julian-tsh@ndhs.org.uk

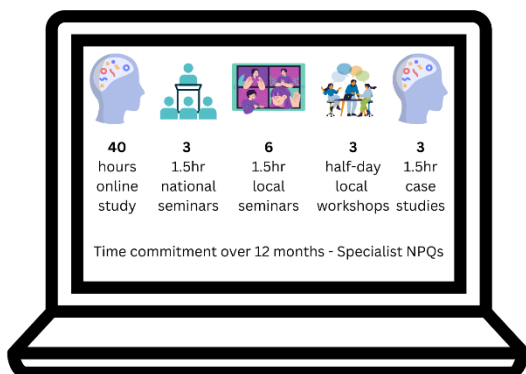


[@TheJulianTSH](https://twitter.com/TheJulianTSH)



How will I learn?

A blend of flexible online learning, online discussion, virtual workshops and face to face workshops, for a few hours study each week over 12-18 months. This is followed by an assessment where you will complete a 1,500-word case study assessment to demonstrate your understanding of real leadership and change.





JULIAN
TEACHING SCHOOL HUB



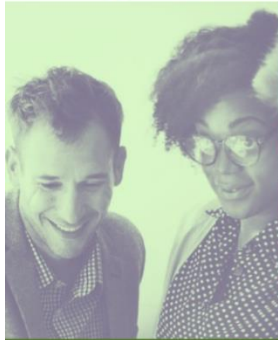
**TEACHER
DEVELOPMENT
TRUST**



Which Leadership NPQ are you?

Apply NOW for
Autumn 2023
start

Take your leadership expertise to the next level



NPQSL



NPQEYL



NPQH



NPQEL



National Professional Qualifications (NPQs)



TheJulian-TSH.org.uk



Julian-tsh@ndhs.org.uk



[@TheJulianTSH](https://twitter.com/TheJulianTSH)



NPQ IN EARLY YEARS LEADERSHIP

Develop expertise in leading high-quality early years education and care, as well as effective staff and organisational management.

Who is it for?

Leaders qualified to at least level 3 with a relevant qualification who are, or want to be:

- Managers of private, voluntary and independent (PVI) nurseries
- Childminders with leadership responsibility
- Headteachers of school-based or maintained nurseries.

What will I learn?

You'll learn how to:

- Develop an evidence-informed teaching culture
- Implement communication, language and literacy approaches to support children's learning
- Effectively manage children's behaviour and support children's personal, social and emotional development
- Ensure all leaders, practitioners and teachers can identify any additional needs early and ensure appropriate referrals.





NPQ IN HEADSHIP

Develop school-focused leadership expertise, which you can use to establish the culture and conditions where staff and pupils can thrive.

Who is it for?

School leaders who are, or want to be:

- Headteacher or head of school.

What will I learn?

The course covers themes including:

- School culture
- Effective teaching
- Supporting curriculum and assessment development
- Establishing and sustaining a positive, predictable and safe environment for pupils
- Additional and special educational needs
- Professional development
- Organisational management.

You will also learn about:

- Implementation strategies
- Working in partnership with parents and carers
- Governance and accountability.

Connecting research and best practice

"The course material is **utterly brilliant**. Such **high quality** and **carefully crafted**. The **spirit and ethos of TDT** is **forefront**."

"**Inspirational and purposeful**, **enjoyable** and **thought-provoking**. **Boy, have TDT got it just right!**"

TDT's Professional Development

TEACHER DEVELOPMENT TRUST





NPQ IN SENIOR LEADERSHIP

Develop your leadership knowledge and expertise to improve outcomes for teachers and pupils in your school.

Who is it for?

Teachers and leaders who are, or want to be:

- Senior leaders with cross-school responsibilities.

What will I learn?

The course covers themes including:

- School culture
- Effective teaching
- Supporting curriculum and assessment development
- Establishing and sustaining a positive, predictable and safe environment for pupils
- Additional and special educational needs
- Organisational management.

Which Leadership NPQ are you?



Apply NOW for
Autumn 2023 start

Lead successful whole school improvement and change in your school with the

NPQ for Senior Leadership (NPQSL)



National Professional Qualifications (NPQs)





JULIAN
TEACHING SCHOOL HUB



**TEACHER
DEVELOPMENT
TRUST**



Which Specialist NPQ are you?

Apply NOW for
Autumn 2023
start

Take your teaching expertise to the next level



NPQLTD
Leading Teacher
Development

NPQLT
Leading Teaching

NPQLBC
Leading Behaviour
and Culture

NPQLL
Leading Literacy



National Professional Qualifications (NPQs)



TheJulian-TSH.org.uk



Julian-tsh@ndhs.org.uk



[@TheJulianTSH](https://twitter.com/TheJulianTSH)



NPQ IN LEADING BEHAVIOUR AND CULTURE

Learn how to create a culture of good behaviour and high expectations in which staff and pupils can thrive.

Who is it for?

All teachers and leaders who are, or want to be:

- Developing and implementing behaviour strategies in their school.

This course is also suitable for other specialised roles including:

- Behaviour management lead
- Special educational needs coordinator
- Pastoral team lead
- Key stage and phase leads
- Social, emotional and mental health lead.

What will I learn?

The course covers themes including:

- Creating a culture of high expectations, including the impact this has on school outcomes
- Enabling conditions for good behaviour, including through implementing effective behaviour management systems
- Dealing with complex behavioural needs.





NPQ IN LEADING LITERACY

Learn how to effectively teach and promote literacy across the whole school, year group, key stage or phase.

Who is it for?

Teachers and middle leaders who have, or want to have:

- Responsibilities for leading literacy across a school, year group, key stage or phase.

What will I learn?

The course covers how to support colleagues to develop all pupils':

- Language capability and wider understanding of language
- Word reading
- Reading comprehension
- Writing skills.

You'll also learn how to:

- Contribute to effective curriculum development linked to teaching, curriculum and assessment across the school
- Design and implement literacy improvement strategies.

School improvement through people development

"Facilitator material is **inspirational and purposeful, enjoyable and thought-provoking.**
Boy, have TDT got it just right!"

"The course material is **utterly brilliant.** Such high quality and carefully crafted. The spirit and ethos of TDT is forefront."

TEACHER DEVELOPMENT TRUST National Professional Qualifications (NPQs)





NPQ IN LEADING TEACHING

Learn how to lead the teaching and learning of a subject, year group or phase.

Who is it for?

Teachers and middle leaders who have, or want to have:

- Responsibilities for leading teaching in a subject, year group, key stage or phase.

What will I learn?

The course covers themes including:

- Understanding what good teaching practice is and how to implement it
- Supporting colleagues to design a broad and coherent curriculum
- Planning effective lessons and stimulate your pupils' thinking
- Helping colleagues adapt their teaching to different needs
- Contributing to the design of school assessment systems
- Aligning your professional development with wider school improvement priorities.

Which Specialist NPQ are you?



Lead teaching, curriculum and assessment across a team in your school with the

NPQ for Leading Teaching (NPQLT)

Apply NOW for Autumn 2023 start

TEACHER DEVELOPMENT TRUST National Professional Qualifications (NPQs)





NPQ IN LEADING TEACHER DEVELOPMENT

Learn how to become a teacher educator and successfully support teachers in your school to expand their skills.

Who is it for?

All staff who have, or want to have:

- Responsibilities for leading the development of other teachers in their school. This includes anyone interested in mentoring trainees or early career teachers.

What will I learn?

The course covers themes including:

- Designing and delivering effective professional development
- How to make informed evidence-based professional development decisions
- Techniques for tailoring and adapting support based on individual development needs.

Which Specialist NPQ are you?

Apply NOW for Autumn 2023 start

Lead successful teacher progression and development in your school with the NPQ for Leading Teacher Development (NPQLTD)

National Professional Qualifications (NPQs)





Find out more:



Who we are:

The Julian Teaching School Hub: Uniting schools to serve every child, by applying best bets for improving outcomes.

We recruit, train and retain the best educators, providing them with high-quality evidence-informed CPD throughout their careers.

Working with schools of all sizes and types, we bring the evidence of what works in classrooms and schools to life through exemplification.

We invite all schools to share in our work, not just those with the capacity to engage readily.

We work within partnerships both regionally and nationally to deliver the very best in education for every child in our region.

