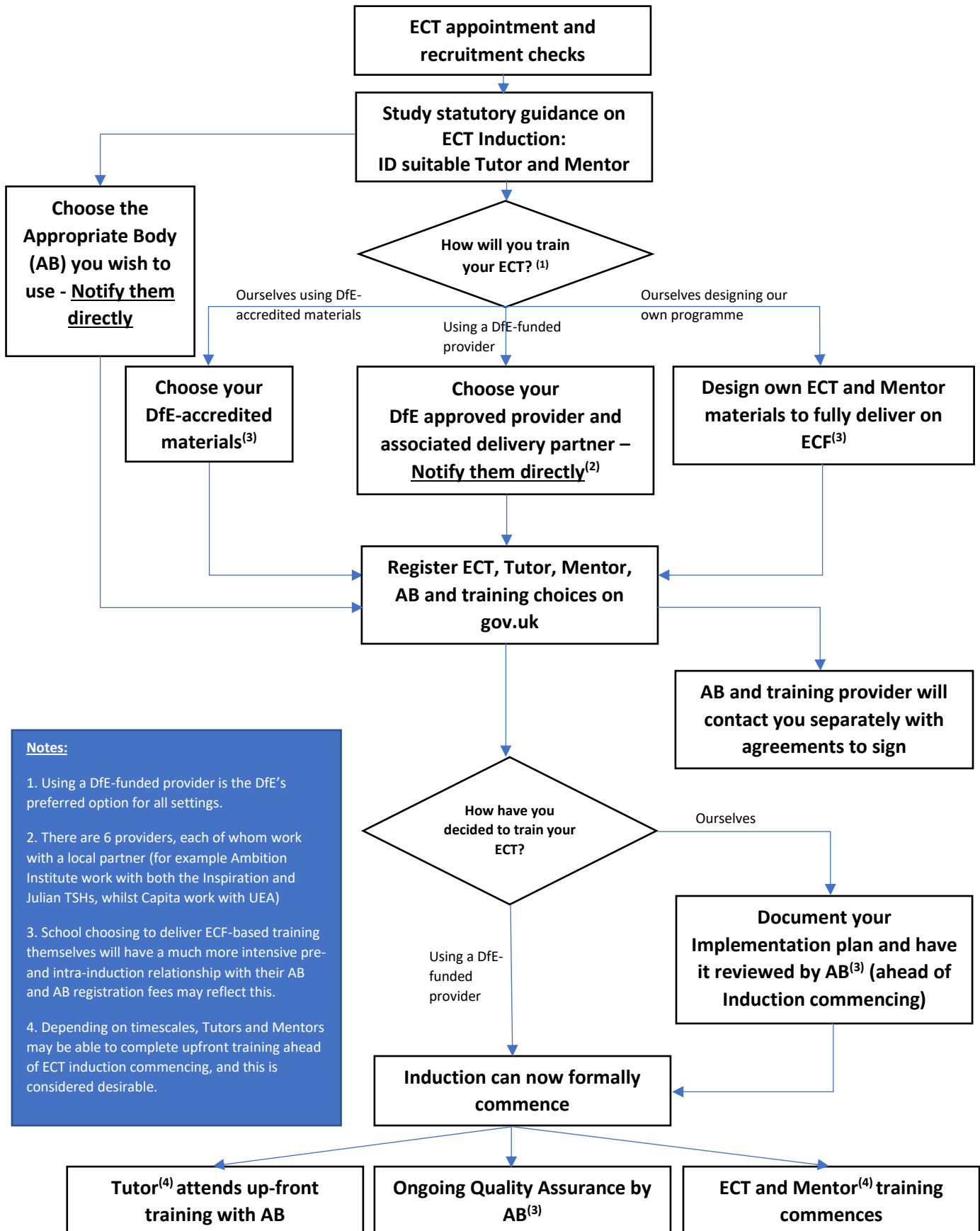


Steps to take on appointing an Early Career Teacher

For ECTs starting induction from September 2022



Notes:

- Using a DfE-funded provider is the DfE's preferred option for all settings.
- There are 6 providers, each of whom work with a local partner (for example Ambition Institute work with both the Inspiration and Julian TSHs, whilst Capita work with UEA)
- School choosing to deliver ECF-based training themselves will have a much more intensive pre- and intra-induction relationship with their AB and AB registration fees may reflect this.
- Depending on timescales, Tutors and Mentors may be able to complete upfront training ahead of ECT induction commencing, and this is considered desirable.